

Kerberos Sensor Barriers HSB-E01 - E06 HSB-S02 - S04

Half-height access control



PRINCIPLE

The requirements for security and aesthetics in companies and public institutions are growing continuously. The sensor barriers of the HSB product family were designed to control the admission of staff and visitors in office and administration buildings, airports and public authorities. They combine features like high throughput rate, user acceptance, comfort and attractive design. Different levels of security prevent unauthorised access.

FINISH

Stainless steel satin finish

CONSTRUCTION

Housing and base columns in stainless steel V2A (1.4301)

Barrier element in stainless steel, curved tube Ø 26,9 mm

- transparent plastic
height choice: 150 mm or 250 mm
- coloured plastic
height choice: 150 mm or 250 mm
- inscription on barrier element

FUNCTION

Type 2 servo positioning drive,
2 x 90° motor driven opening
and closing

● Security level 1

Basic units HSB-E01, E02, S02 and extension units:

basic level of single passage
regulation in both directions,
control by several optosensors.
Unit length E01/E02 = 1470 mm
Unit length S02 = 1730 mm

● Security level 2

Basic units HSB-E03, E04, S03 and extension units:

increased level of single passage
regulation in both directions,
control by several optosensors.
Unit length E03/E04 = 2050 mm
Unit length S03 = 2310 mm

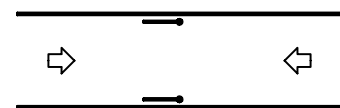
● Security level 3

Basic units HSB-E05, E06, S04 and extension units:

high level of single passage
regulation in entry direction,
control by several optosensors.
Unit length E05/E06 = 2590 mm
Unit length S04 = 2850 mm

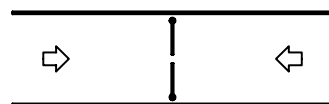
2 operating modes possible:

- basic position open
„day operation“



The door wings close auto-
matically, if somebody tries
to pass without authorisation.

- basic position closed
„night operation“



The door wings open automa-
tically in passage direction for
authorised people and then close
again.

Protective device

The swiveling angle of the door wings
is surveyed by sensors.

In case of power failure

Door wings move freely in both
directions.

● alternative ○ optional
Subject to technical modifications

Kerberos HSB

Half-height Sensor Barriers

ELECTRICAL EQUIPMENT

Controls and power supply integrated in unit
Supply 110 - 230 V AC 50/60 Hz

OPTIONS

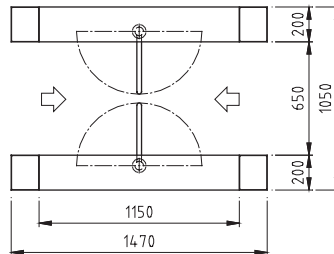
- separate column for card reader
- card reader installation
- release push-button
- signal devices
- operating panel OPL 05, grey functions:
single release entry/exit,
„day/night operation“, blocking,
permanent release entry/exit
- emergency devices
(approval required in single cases,
local regulations have to be observed)
- all-over cover plate on top side of housing in a variety of materials

INSTALLATION

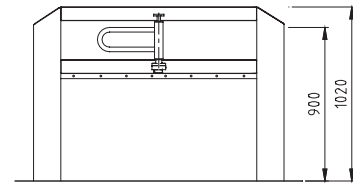
Housing on finished floor level

- on structural floor with base construction
- palette with stainless steel ramp, rubber covering, height 32 mm

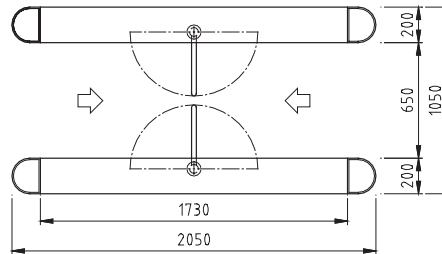
PLAN VIEW HSB-E01
Security level 1



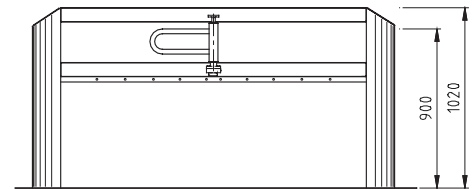
SIDE VIEW HSB-E01



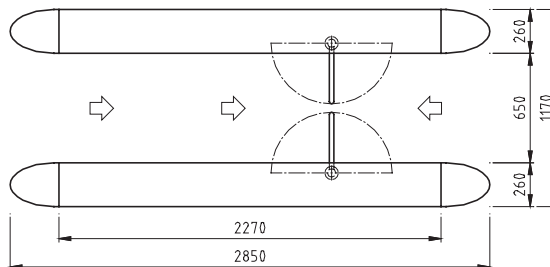
PLAN VIEW HSB-E04
Security level 2



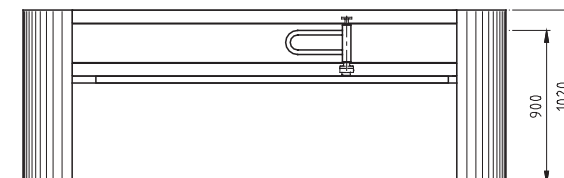
SIDE VIEW HSB-E04



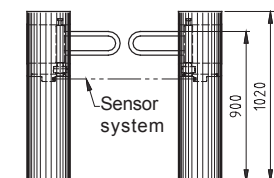
PLAN VIEW HSB-S04 - Security level 3



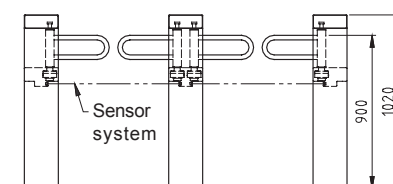
SIDE VIEW HSB-S04



FRONT VIEW HSB-S04



FRONT VIEW HSB-E01
Basic unit with 1 extension unit



Sales partner:

All dimensions in mm

● alternative ○ optional
Subject to technical modifications